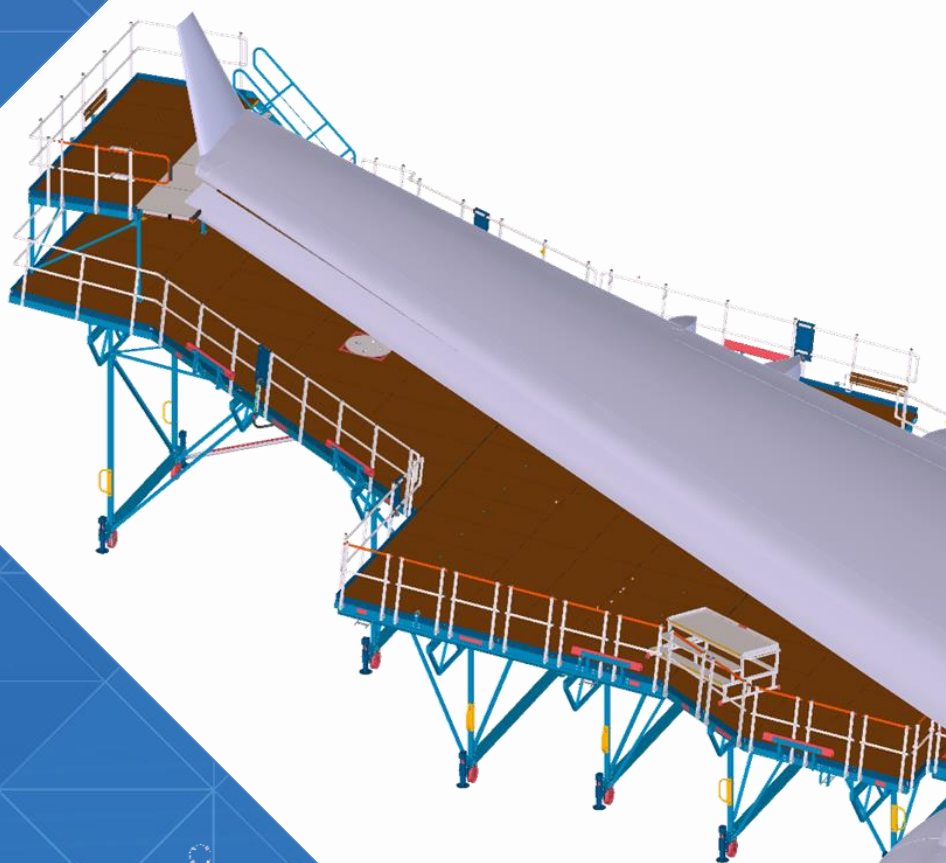


WIDE BODY AIRCRAFT WING DOCK

Product Group 2005



NIJL Aircraft Docking
Punterweg 4
8042 PB Zwolle
The Netherlands

T +31 38 202 80 20
E info@nijlgroup.com

www.nijlgroup.com

CAGE code: H2BL2



NIJL[®]
aircraft docking

MOBILE MODULAR WB WING DOCK

Product Group 2005

The mobile wing dock provides the time-efficient and flexible maintenance solution for wide body aircraft. The modular design enables multiple wide body aircraft applications and functionality tailored to your workflow and aircraft maintenance procedures.

Key Benefits

- + Specifically designed for modern wide body aircraft
- + Height adjustable for aircraft on wheels and jacked
- + Ground mobile for flexible maintenance operations in the hangar bay
- + Modular design for time-efficiency and minimal footprint operations for various aircraft combinations
- + Under wing access from main landing gear strut to wing tip for maintenance and flight control surfaces testing
- + Optional modules: wing tip and upper wing access
- + Adjustable floor and railing systems for ease of docking, multiple aircraft applications, flight control surface deflections and safety procedures
- + Robustness and stability due to mixed aluminum and steel material application
- + Design according to the latest safety standards

Features

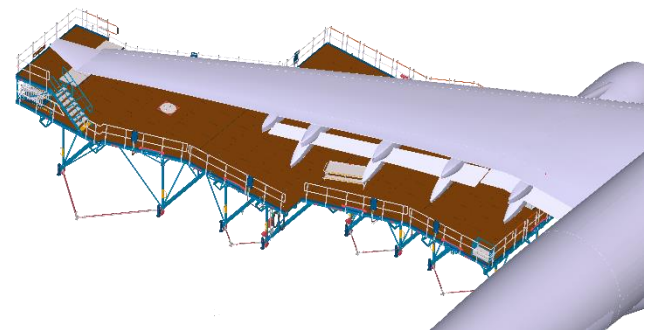
- + Height adjustable with electric-hydraulic system for ergonomics and ease of maintenance operation
- + Large sloped floor platform with walk zones around projected wing area
- + Extendable floors for aircraft wing tripod configurations, access, utility system transits and safety purposes
- + Adjustable railing configurable for nose-in or tail-in docking procedures and fall protection
- + Rubber padding for aircraft surface protection
- + Utilities and lighting for aircraft maintenance operations

Specifications

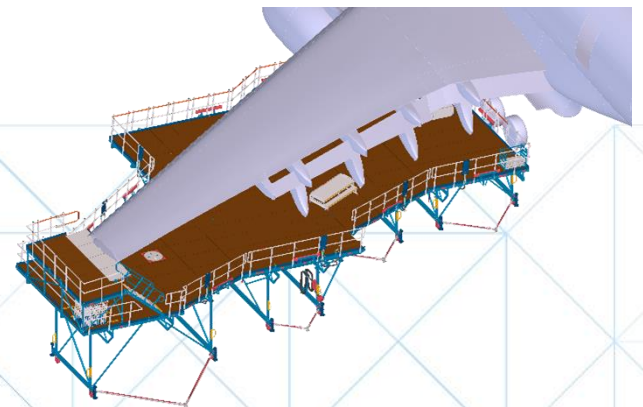
- + Overall length (A330 main wing one side only) : approx.. 25100 mm
 - + Minimum module floor height (outer A330 MLG location) : approx. 2330 mm
 - + Minimum module floor height (A330 wing tip location) : approx. 4940 mm
 - + Height adjustment stroke (A330 application) : approx. 1450 mm
 - + Max. load per module 1250 kg (200 kg/m²)
- Other platform dimensions and aircraft combinations upon request*



Modular Wing Dock on LH main wing



Under wing coverage with wing tip access



Fit for multiple aircraft configurations