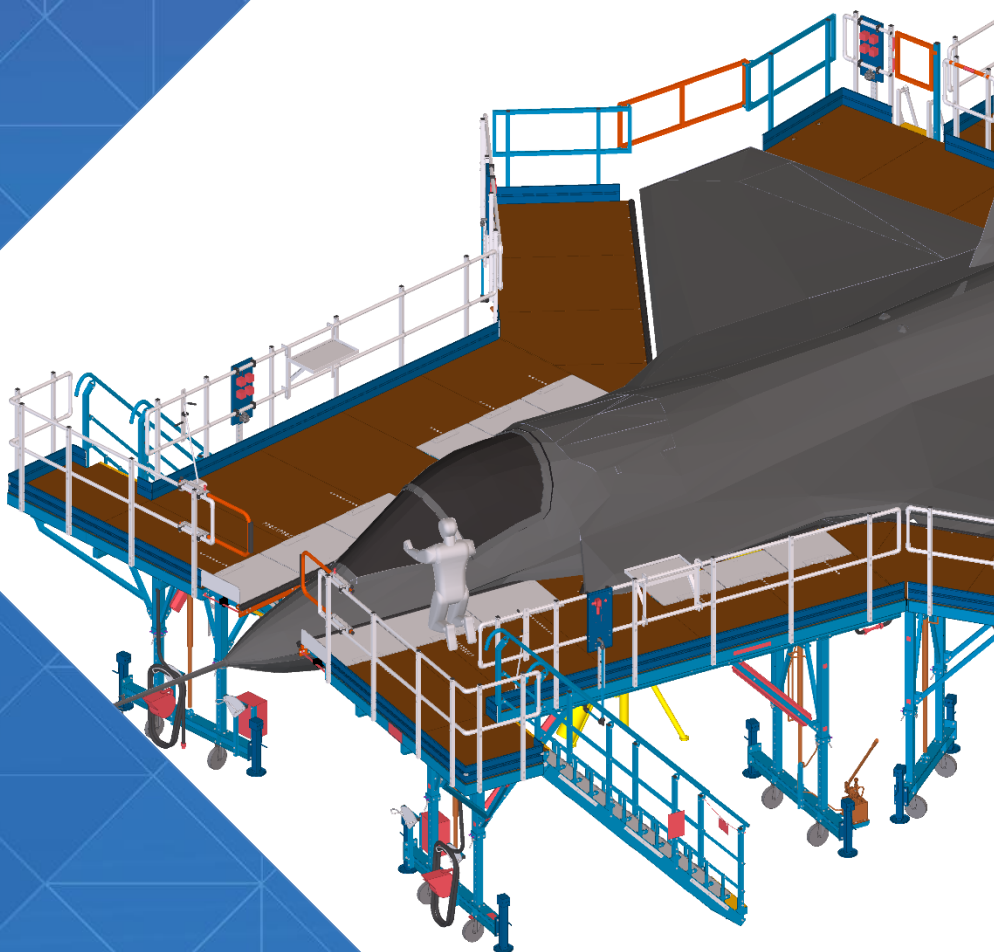


FIGHTER JETS PLATFORMS

Product Group 9059



NIJL Aircraft Docking
Puntenweg 4
8042 PB Zwolle
The Netherlands

T +31 38 202 80 20
E info@nijlgroup.com

www.nijlgroup.com

CAGE code: H2BL2



NIJL[®]
aircraft docking

COMPLETE DOCKING SYSTEM SPECIFIC FOR F35 (JSF)

ALSO AVAILABLE FOR F15, F16, F/A18 AND F22

Product Group 9059

For the Dutch defense we designed a dock for the maintenance of F35 aircraft. The docking system consists of nine separate mobile platforms that are connected to each other. The platforms are positioned closely around JSF and follow the contours of the aircraft with sliding floors.

Key Benefits

- + Easy to maneuver with multiple configurations possible because of the nine separate mobile parts
- + Space-efficient because all the platforms are ground mobile
- + Lightweight and stable construction due to an optimal mix of steel and aluminum
- + Sliding floors to access aircraft panels, manually adjustable
- + Optimal safety; all platforms are equipped with safety railing types
- + Height adjustable to access the aircraft on multiple levels

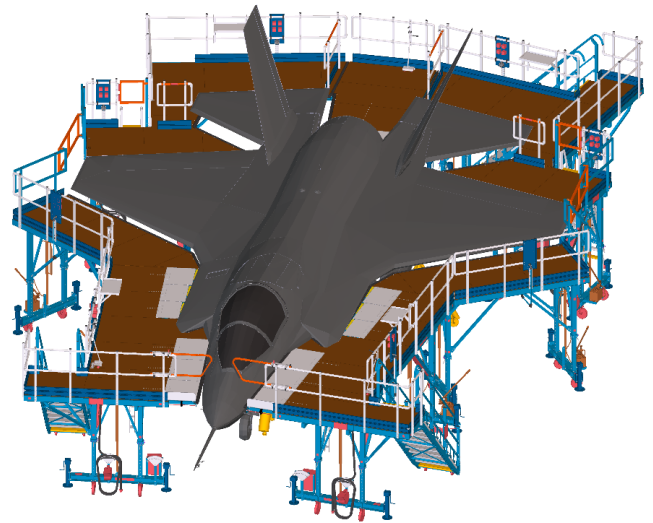
Features

- + Surrounded with rubber padding to protect the aircraft skin (design based on no touch policy)
- + FOD prevention incorporated
- + CE declaration of conformity
- + Platform is in compliance with: EC-Machinery Directive (2006/42/EG) & modifications

Specifications

- + Footprint dimensions (in operation) : approx. 18000 x 12650 mm
- + Minimum platform height : approx. 2000 mm
- + Maximum platform height: approx. 2750 mm
- + Load capability: max. 200 kg/m² (2 persons with tools)

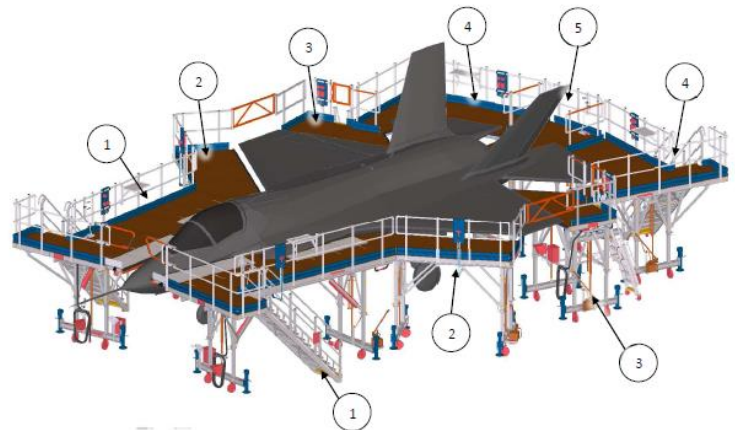
Other platform dimensions and aircraft combinations upon request



Dock following the contours of aircraft

The F-35 Docking System has the following (main) components:

1. FWD Fuselage Platform LH / RH (mirrored)
2. Wing Leading Edge Platform LH / RH (mirrored)
3. Wing Trailing Edge Platform LH / RH (mirrored)
4. Horizontal Platform LH / RH (mirrored)
5. Engine Platform



Nine separate mobile modules

